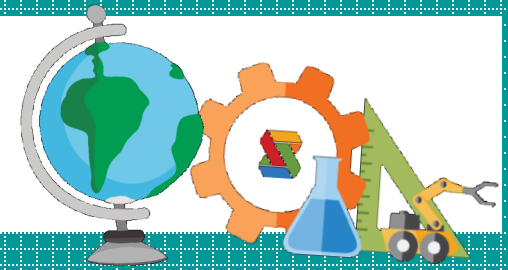




August Breakfast Menu



| Sun | Mon | Tue | Wed | Thu | Fri | Sat |
|---|---|--|--|--|---|---|
| WG= Whole Grain | 1 English Muffin Apple Slices | 2 Waffles (WG) Mandarin Oranges | 3 Cinnamon Toast (WG) Peaches | 4 Pancakes (WG) Banana | 5 Bagel (WG) w/cream cheese Pears | Ages 1-2 Grain 1/2 oz Veg/Fruit 1/4 cup Milk 1/2 cup |
| 7 <i>Whole, unflavored milk is served to children one year of age and 1 percent, unflavored milk to all children two years of age and older ****</i> | 8 French Toast Cinnamon sticks (WG) Banana | 9 Pancakes (WG) Apple Slices | 10 Biscuit (WG) w/jelly Orange slices | 11 Raisin Bread (WG) w/cream cheese Peaches | 12 Cereal Orange Slices | 13 Ages 3-5 Grain 1/2 oz Veg/Fruit 1/2 cup Milk 3/4 cup |
| 14 | 15 Pancakes (WG) Applesauce | 16 Cinnamon Toast (WG) Peaches | 17 Waffles (WG) Banana | 18 English Muffins Orange slices | 19 Bagel (WG) w/cream cheese Pears | 20 Ages 6-12 Grain 1 oz Veg/Fruit 1/2 cup Milk 1 cup |
| 21 <i>This institution is an equal opportunity provider</i> | 22 Biscuit (WG) w/ jelly Peaches | 23 French Toast Cinnamon sticks (WG) Banana | 24 Pancakes (WG) Pears | 25 Toast (WG) Applesauce | 26 Cereal Orange slices | |
| 28 | 29 English Muffin Apple Slices | 30 Waffles (WG) Mandarin Oranges | 31 Cinnamon Toast (WG) Peaches | | | |